

WORKPACKAGE 1

Seamless freight transports chains of the future

LEVI, FINLAND, 27. SEPTEMBER 2024

PRESENTATION OUTLINE

- PURPOSE AND AMBITIONS
- STATUS AND ONGOING WORK
- CHALLENGES AND REMAINING WORK
- A FEW EXAMPLES/FINDINGS



PROJECT AMBITIONS 2024-2026 (WP1)

2024: STATUS OF FREIGHT FLOW VOLUMES: MARKET ANALYSIS FOR

- **SELECTED CORRIDORS**

- **AND INDUSTRIES:**

- ✓ SEAFOOD
- ✓ MINERALS AND MINING
- ✓ AGRICULTURE
- ✓ WASTE
- ✓ GROCERY
- ✓ PETROLEUM PRODUCTS
- ✓ FORESTRY, PAPER, PULP....
- ✓ METAL INDUSTRIES
- ✓ OTHERS

2025: BOTTLENECKS AND CHALLENGES

2026: RECOMMENDATIONS



NOTER
PROJECT CORRIDORS – SECTIONS IN 3 COUNTRIES:

- NORWAY
- SWEDEN
- FINLAND

BORDER CROSSING POINTS



NEW NORTH WP1: PROGRESS (MAIN ACTIVITIES)

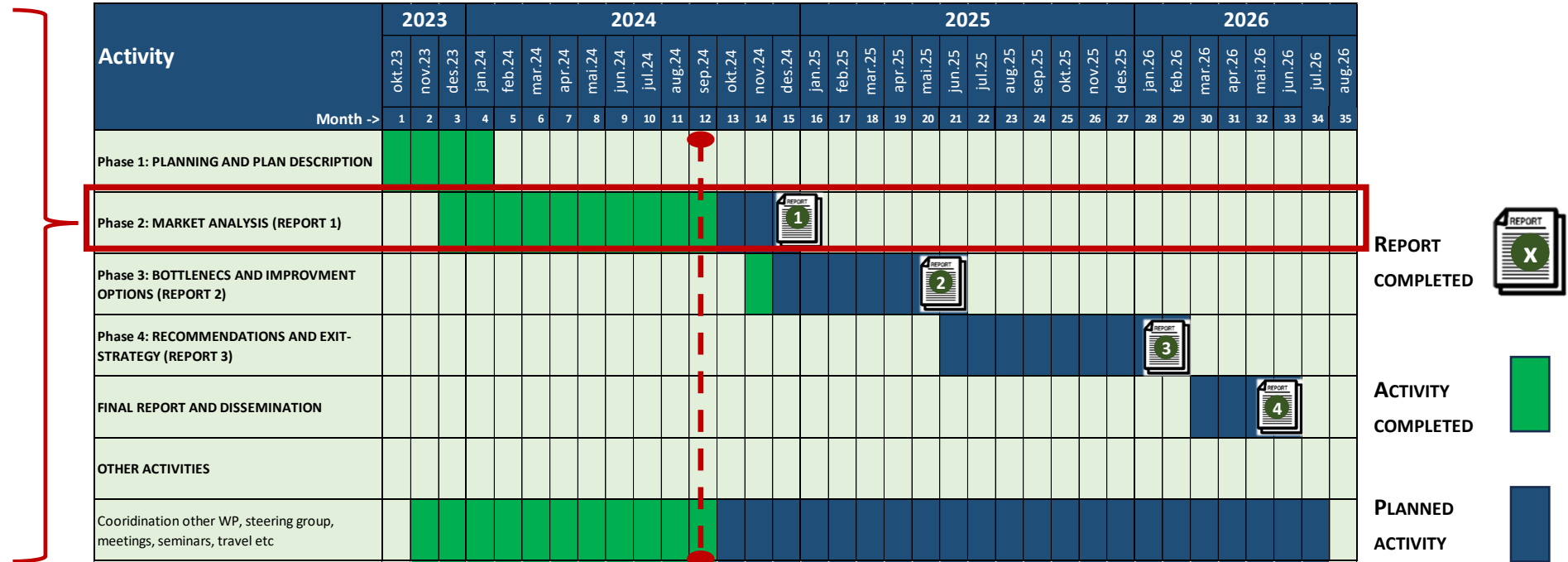
ONGOING

1. COLLECTION DATA

- SECONDARY
- PRIMARY

2. STRUCTURING AND ANALYSIS

3. PRESENTATION OF INFORMATION



CHALLENGES AND REMAINING WORK

1. COLLECTION DATA FROM PRIMARY SOURCES

2. COLLECTION DATA FROM SECONDARY SOURCES

- DIFFERENT CLASSIFICATION

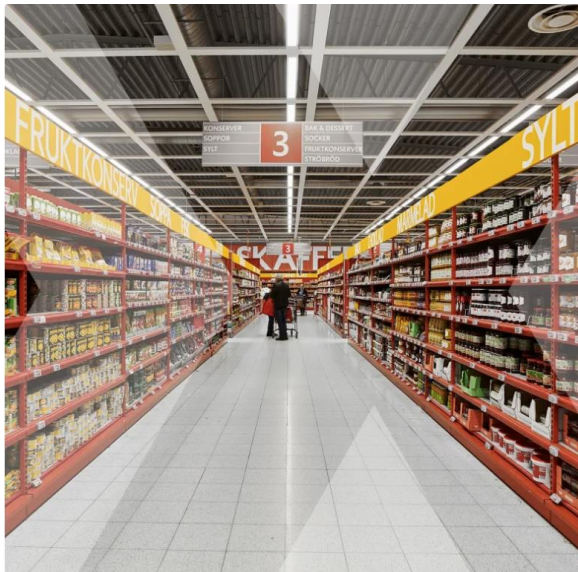
3. MORE COMPLICATED SOUTH IN THE REGION THAN NORTH

- VOLUMES ARE MUCH LARGER AND DIVERSIFIED IN THE SOUTH, PARTICULARLY IN FINLAND AND SWEDEN

3 challenges and 3 examples

COLLECTION DATA FROM PRIMARY SOURCES

- SOME COMPANIES DO NOT RESPOND/WILL NOT RESPOND
- COMMERCIAL SECRETS?



EXAMPLE GROCERY BUSINESS

NORWAY/FINLAND:

- GOOD INFORMATION FROM ALL MAJOR PLAYERS, LIKE REMA, COOP, ASKO, KESKO, S-GROUP ETC

SWEDEN:

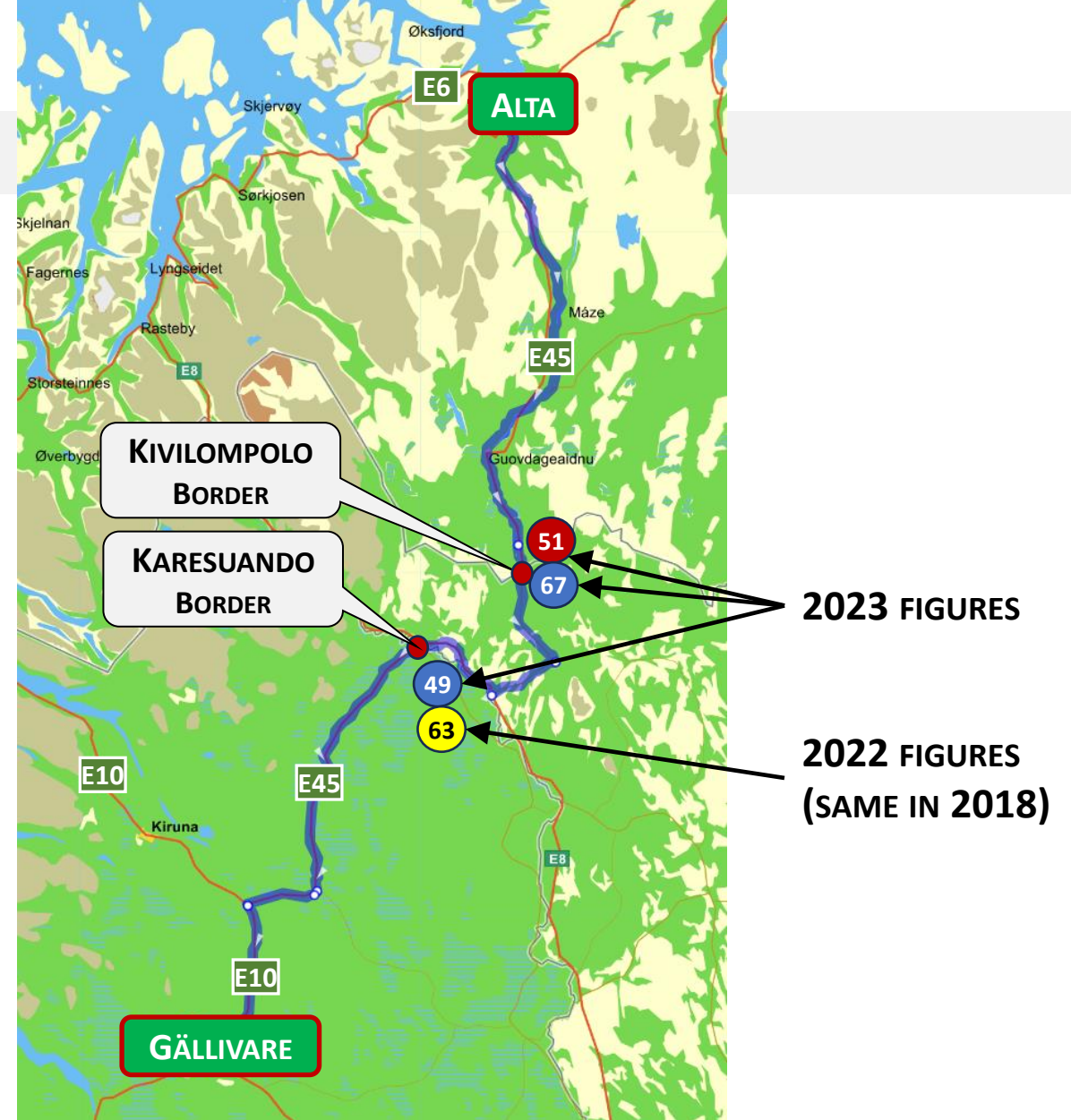
- NO INFORMATION (SO FAR) FROM THE PLAYERS COVERING 90% OF THE SWEDISH MARKET
- HOW TO SOLVE THE LACK OF INFORMATION:
 - ✓ WE KNOW WHERE ALL RETAILERS ARE, NUMBER OF SHOPS, SIZE OF THE SHOPS AND THE LOCAL POPULATION.
 - ✓ THE TRANSPORTS CAN BE ESTIMATED BASED ON THESE FIGURES AND EXPERIENCE FROM FINLAND/NORWAY
 - ✓ WE CONTROL THE ESTIMATES, BASED ON INFORMATION FROM A SELECTION OF RETAILERS

COLLECTION DATA FROM SECONDARY SOURCES

- DIFFERENT CLASSIFICATION AND YEAR OF REGISTRATION

WHAT WE BELIEVE SHOULD BE QUITE SIMILAR

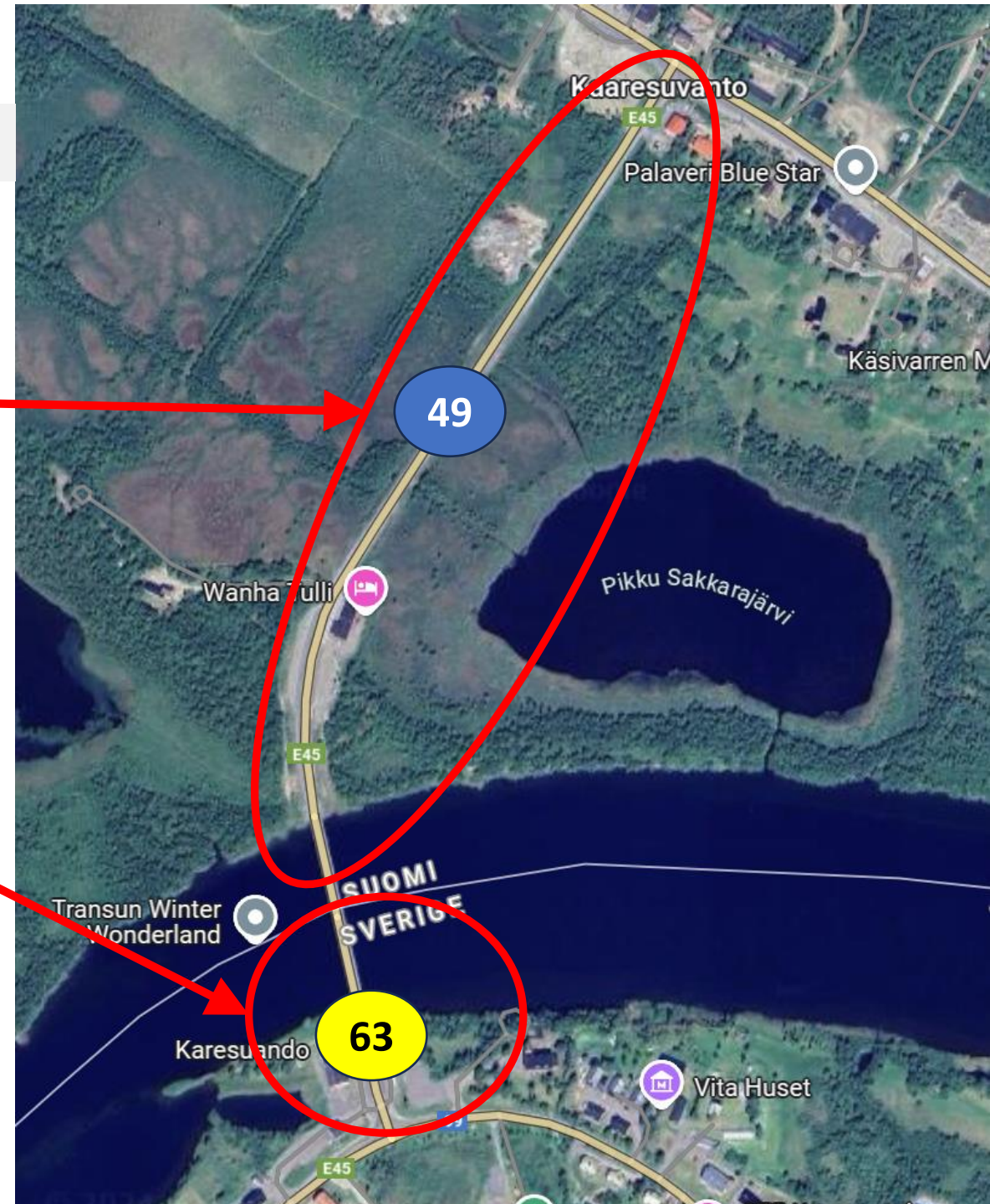
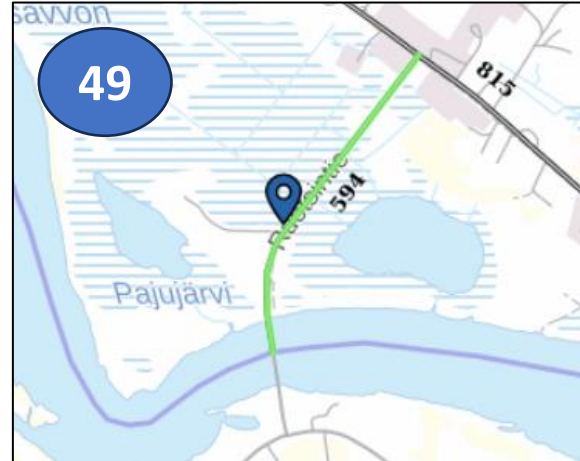
- NORWAY: VEHICLES LARGER THAN 16 METER
- SWEDEN: VERY HEAVY VEHICLES
- FINLAND: SEMI + TRUCK WITH TRAILER + HTC
OR
COMBINATION VEHICLES (KVL_YHDISTELMA)



KARESUANDO/KARESUVANTO

ERROR SOURCES ?:

- STRETCH MEASUREMENTS
- REGISTRATION YEAR
- VEHICLE CLASSIFICATION
- TECHNICAL ISSUES OR MEASUREMENT SYSTEM
- OTHER

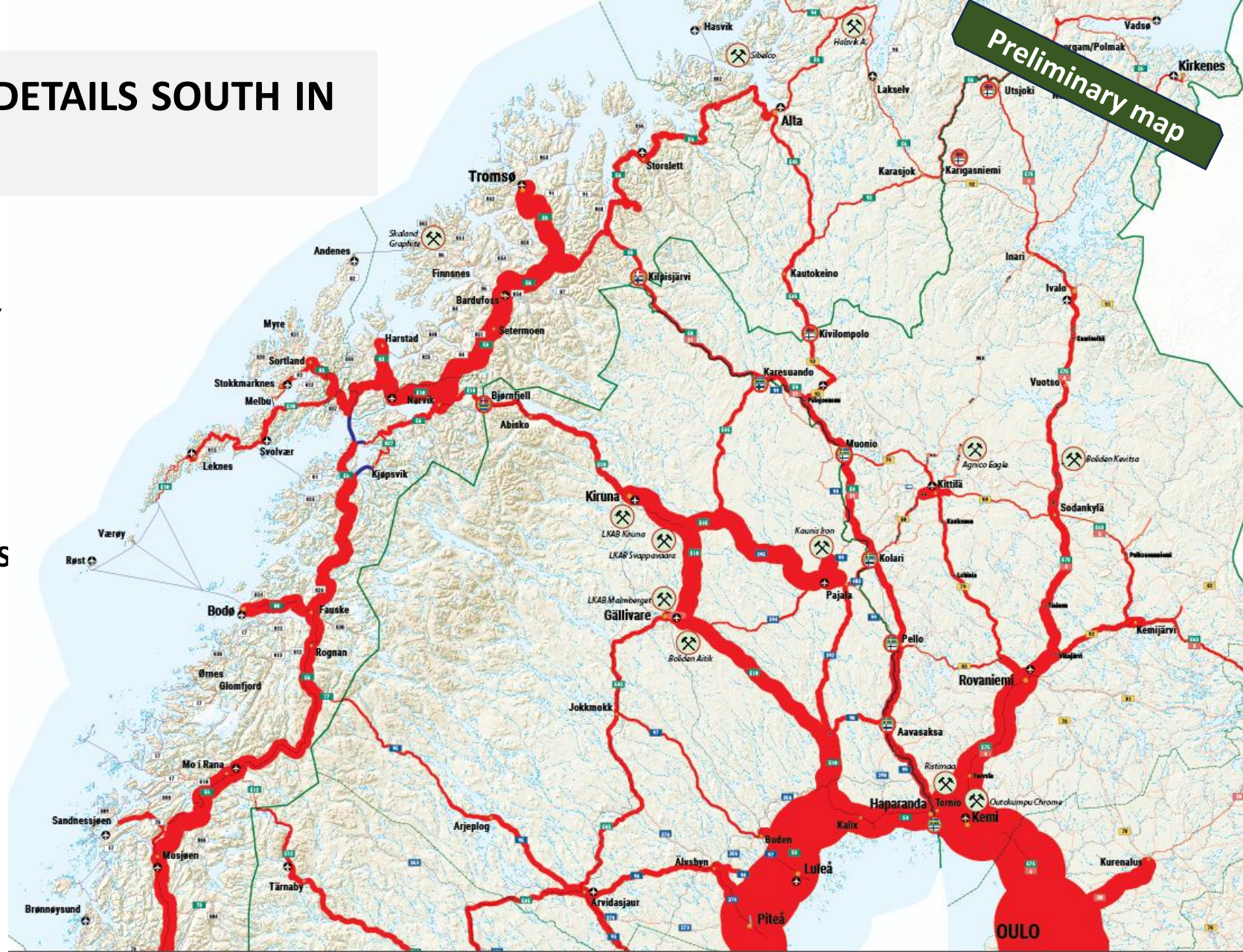


MORE COMPLICATED TO FIND DETAILS SOUTH IN THE REGION THAN NORTH

- **VOLUMES ARE MUCH LARGER AND DIVERSIFIED IN THE SOUTH, PARTICULARLY IN FINLAND AND SWEDEN**

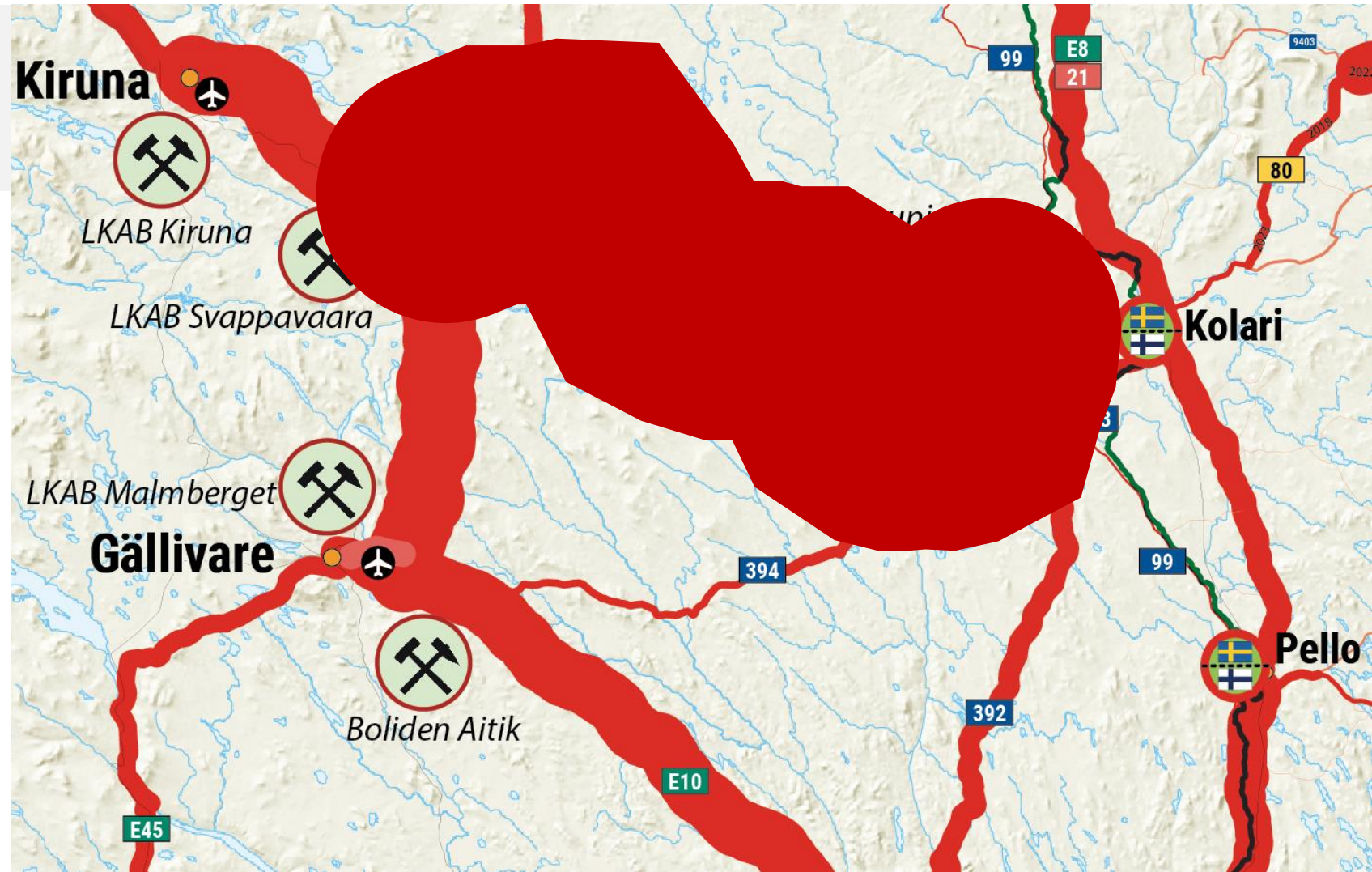
EXAMPLE:

- **THE ANNUAL AVERAGE DAILY TRAFFIC WITH HEAVY VEHICLES AROUND UTSJOKI IS 3-22 AND KILIPSJÄRVI 70-80, WHILE THE SAME FIGURES AROUND OULU CAN BE MORE THAN 1.000**

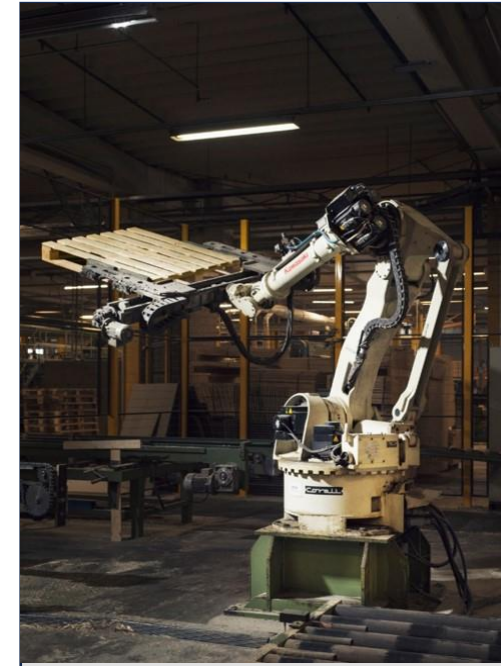


BUT THERE ARE EXCEPTIONS IN THE NORTHERN NORTH

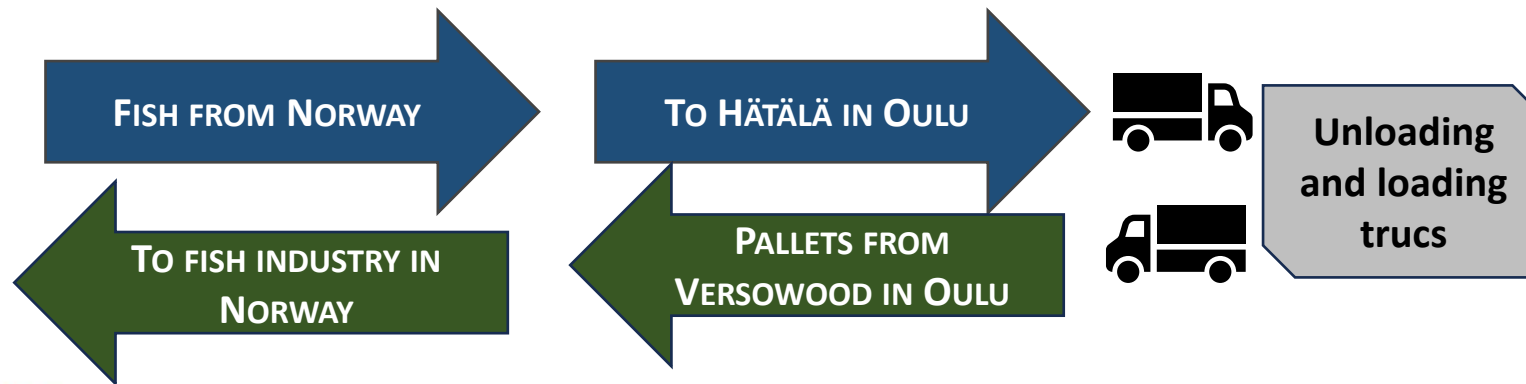
- E10 SOUTH OF KIRUNA
- LARGE MINES (KAUNIS)
- AND REGIONAL MINERAL RESOURCES (SAND, GRAVEL ETC)



EXAMPLE COOPERATION: FISH FROM NORWAY TO OULU AND PALLETS IN RETURN



“Versowood is Finland’s largest private sawn timber producer... We manufacture over 5 million loading pallets. The Haukiputaa factory is the most northern pallet factory in Finland; from there we transport all of our Norway-bound loading pallets.”



BOLIDEN KEVITSA 2023

- E75: ROAD KEVITSA-PORT OF KEMI: 100%
- SEA TO RÖNNSKJÄR (SKELLEFTEÅ): 61%
- RAIL TO HARJEVALTA (PORI): 39%



Interreg



Co-funded by
the European Union

Aurora

New North



THE SHARE OF A COMPANY'S, OR AN INDUSTRY'S, TRANSPORT WORK ALONG A ROAD DEPENDS ON WHERE YOU MEASURE

